



VILLAGEOUTDOORS

LANDSCAPE SUPPLY & EQUIPMENT

2019 CATALOG

www.villageoutdoors.com



01
TURF & PLANT
FOOD
PG. 5-11



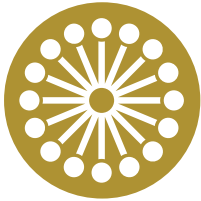
07
SPORTS FIELDS
PG. 30-31



02
VILLAGE
PREMIUM SEED
PG. 12-15



08
ANIMAL CONTROL
PG. 32-33



03
HERBICIDES
PG. 16-21



09
SPRAY ADDITIVES
PG. 34-35



04
INSECTICIDES
PG. 22-24



10
SMALL EQUIPMENT
PG. 36-41



05
FUNGICIDES
PG. 25-27



11
ICE MELTER
PG. 42-45



06
AQUATICS
PG. 28-29



VILLAGEOUTDOORS

**STRIVING TO
DELIVER A SUPERIOR
CUSTOMER SERVICE
EXPERIENCE**



01

TURF & PLANT FOOD

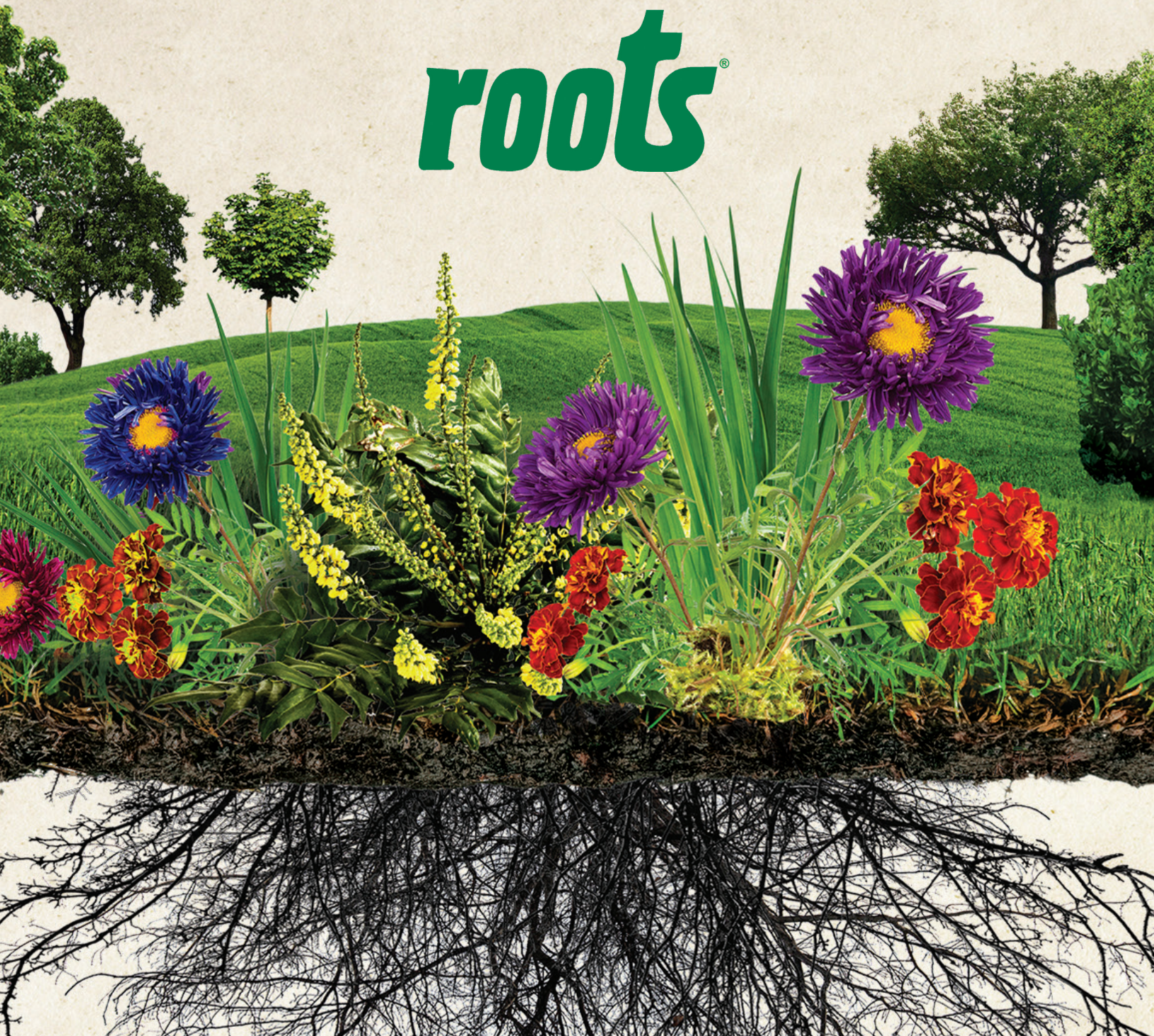


VILLAGEOUTDOORS

Roots® biologically enhanced nutrients
grow more beautiful, vigorous plants

WE'RE ROOTING FOR YOU

roots®





SPRAYABLE FAIRWAY NUTRITION REDEFINED

Combining HCU™ and Foltec® SG Minors creates an ideal tank mix of nitrogen, humic acid, and minor elements, and delivers exceptional performance with strong economics in use.



HCU™ - HUMIC COATED UREA

HCU granules represent a sensible approach to nitrogen application, combining urea and humic acid in a 100% soluble granule. While providing equal or better performance than leading stabilized nitrogen products, HCU granules also offer strong economics in use.

DiscoverHCU.com

FOLTEC® SG MINORS

Foltec SG Minors is a proprietary combination of dry, 100% soluble granules that contains selected secondary and minor elements, along with sea plant extract and humate. With easy to understand coverage and application rates, Foltec SG truly allows you to spray smarter.

FoltecSG.com

AndersonsPlantNutrient.com | [@AndersonsTurf](https://twitter.com/AndersonsTurf)



NEW LIQUID CONCENTRATE
with Iron & Humic!

TCS AMP-XC™ Liquid Concentrate is an **INNOVATIVE FERTILIZER BIOCATALYST** that **INCREASES** Nutrient Availability and **IMPROVES** Plant Performance to **GET MORE** out of Fertility Management Programs

PRIMARY BENEFITS

- Improves fertilizer efficiency, nutrient availability & uptake
- Promotes deeper, stronger, and more well-developed root systems
- Increases overall turf health & seedling viability
- Improves flowering & budding
- Reduces compaction; improves water absorption & stress management



AMP-XC™ Technology also available on HI-Cal Lime and granular fertilizer

AMP-XC™ APPLICATION RESULTS

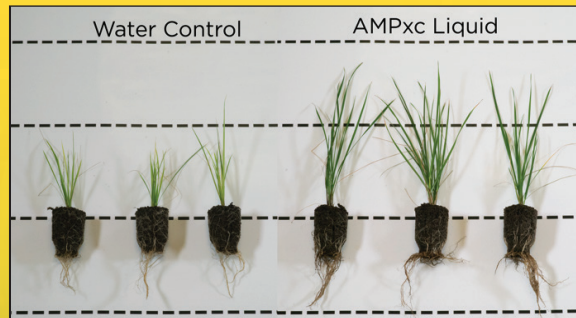
RESTORES & RECOVERS Turf

(Results 3 weeks after application)



INCREASES Nutrient Uptake & Plant Health

(Slant Tube Test, 3 weeks growth)



IMPROVES Seedling Viability

(Applied 1 week after seeding, no fertilizer added. Results 2 weeks after application)



PROMOTES Deeper & Stronger Roots

(Tall Fescue 4 Weeks After Seeding – Increased Root Mass)



Delivers Nutrition to the Root Systems and Improves Plant Performance!



www.TurfCareSupply.com
Or follow us @turfcaresupply

ProScape® Fertilizer and Fertilizer Combination Products

ProScape fertilizers and fertilizer combination products offer a wide selection of fertilizer products, along with easily and accurately applied granular fertilizer combination weed and insect controls. In the ProScape brand of products you'll find exclusive technologies such as Meth-Ex® 40, a high efficiency methylene urea and MESA®, a specially formulated nitrogen known for delivering brilliant color response.

Item #	Item Description	Approx. Sq.Ft. Covered/ Bag	Lbs. Product /1000 Sq. Ft.	Lbs. Product /Acre	Nutrients lbs. / 1000 Sq. Ft.		
					N	P	K
Straight Fertilizer 50 lb. Bag Mid Grade SGN 145 - 150							
2153742	16 4 8 Ammoniaval 1% Fe	8,000	6.20	272	1.00	0.25	0.50
2253717	20 0 10 60% MESA 100% EXPO	11,000	4.50	196	0.90	0.00	0.45
2154241	20 0 25 100% EXPO® SOP	10,000	5.00	218	1.00	0.00	1.25
2154293	34 0 0 100% MESA	18,900	2.64	115	0.90	0.00	0.00
2153881	38 0 0 100% U-Form *	20,800	2.40	103	0.90	0.00	0.00
2154292	40 0 0 100% Meth-Ex 40*	20,000	2.50	109	1.00	0.00	0.00
Straight Fertilizer - Eco Blend 40 lb. Bag SGN 150							
2253852	10 2 3 70% Biosolids 30% MESA 100% EXPO	6,700	7.5	325	0.90	0.15	0.224
2253850	15 2 5 51% Biosolids 49% MESA 100% EXPO	8,375	6.0	260	0.90	0.12	0.30
Straight Fertilizer 50 lb. Bag SGN 195 - 220							
2154489	12 25 12 Homogeneous AM MOP**	12,500	4.00	175	0.48	1.00	0.48
2253648	16 25 12 25% MESA	12,500	4.00	175	0.64	1.00	0.48
2253621	19 0 19 62% MESA 3% Fe SOP	9,500	5.25	229	1.00	0.00	1.00
2254316	20 0 5 30% MESA 1% Fe	10,000	5.00	218	1.00	0.00	0.25
2253606	20 0 10 40% MESA 1% Fe SOP	10,000	5.00	218	1.00	0.00	0.50
2154242	20 0 25 100% EXPO SOP	12,500	4.00	175	0.80	0.00	1.00
2254318	25 0 5 51% MESA 1% Fe	12,500	4.00	175	1.00	0.00	0.20
2153629	25 0 12 67% CRN EXPO SOP/ MESA	12,500	4.00	175	1.00	0.00	0.48
2154257	30 0 0 100% MESA	15,000	3.33	145	1.00	0.00	0.00
2254324	32 0 6 30% MESA	16,000	3.13	136	1.00	0.00	0.19
2154276	40 0 0 100% Meth-Ex 40*	20,000	2.50	109	1.00	0.00	0.00
Fertilizer with Acelepryn Insecticide + Dimension Pre-Emergent Herbicide 50 lb. Bag SGN 150 - 220							
2254806	38 0 0 100% Meth Ex .067 Acel .253 Dim	14,535	3.44	150	1.30	0.00	0.00
2254812	30 0 10 100% Meth Ex 100% EXPO* .067 Acel .167 Dim~	14,535	3.44	150	1.30	0.00	0.34
2254796	30 0 10 100% Meth Ex 100% EXPO .067 Acel .167 Dim°	14,535	3.44	150	1.30	0.00	0.34
2254792	25 0 5 51% MESA 100% EXPO* .067 Acel .167 Dim~	14,535	3.44	150	0.86	0.00	0.17
2254804	25 0 5 51% MESA 100% EXPO* .067 Acel .167 Dim°	14,535	3.44	150	0.86	0.00	0.17
2254814	19 0 9 50% MESS 100% EXPO .067 Acel .253 Dim	14,535	3.44	150	0.65	0.00	0.31
2253874	17 0 5 30% PCU MOP .067 Acel .167 Dim	14,535	3.44	150	0.59	0.00	0.17
2254802	13 0 5 50% MESA 100% EXPO* .067 Acel .167 Dim	14,535	3.44	150	0.45	0.00	0.17
2253878	0 0 7 SOP .067 Acel .167 Dim~	14,535	3.44	150	0.00	0.00	0.24
2253876	0 0 7 MOP .067 Acel .167 Dim°	14,535	3.44	150	0.00	0.00	0.24

Item #	Item Description	Appox. Sq.Ft. Covered/ Bag	Lbs. Product /1000 Sq. Ft.	Lbs. Product /Acre	Nutrients lbs. / 1000 Sq. Ft.			Lbs. Act. Ingredient /Acre
					N	P	K	
Fertilizer with Organic Base 50 lb. Bag								
2154281	6 1 11 Organic Biosolid 7% Complex Fe	10,000	5.00	218	0.30	0.05	0.55	NA
2158145	9 2 5 Organic Biosolid 6% Complex Fe	10,000	5.00	218	0.45	0.10	0.25	NA
2253844	15 2 8 Organic Base 30% MESA	7,500	6.65	290	1.00	0.13	0.53	NA
Fertilizer with Pre + Post Herbicide 40 lb. Bag SGN 200 - 220								
2253846	0 0 7 2.5% Fe .17 Dimension®/Lockup	14,300	3.50	150	0.00	0.00	0.24	Dimension .225 LockUp 1.695
2253883	8 0 24 .145 Dimension/Confront® 3 33% MESA	14,300	3.50	150	0.28	0.00	0.84	Dimension .218 Confront 3 1.949
2253703	19 0 6 .17 Dimension®/LockUp® 40% MESA	14,300	3.50	150	0.66	0.00	0.21	Dimension .225 LockUp 1.695
2153564	19 0 6 .16 Dimension/Trimec® 33% MESA	14,300	3.50	150	0.66	0.00	0.21	Dimension .24
2153580	19 0 6 .145 Dimension/Confront® 3 33% MESA	14,300	3.50	150	0.66	0.00	0.21	Trimec 1.26 Dimension .218 Confront 3 1.949
Fertilizer with Preemergent Herbicide 50 lb. Bag SGN 150 - 220								
2254326	16 0 8 43% MESA .38 Barricade® MOP	12,750	3.90	170	0.62	0.00	0.32	0.65
2254269	16 0 8 43% MESA .43 Barricade MOP	14,750	3.40	150	0.55	0.00	0.28	0.57
2253602	18 0 5 25% MESA .09 Dimension MOP	15,500	3.20	140	0.58	0.00	0.16	0.13
2253848	14 0 6 25% Meth Ex 2% Fe .15 Dim SOP	13,200	3.80	165	0.53	0.00	0.23	0.25
2253837	15 0 5 40% MESA .15 Dimension MOP	13,200	3.80	165	0.57	0.00	0.19	0.25
2253841	20 0 8 40% MESA .15 Dimension MOP	13,200	3.80	165	0.76	0.00	0.30	0.25
2253839	22 0 6 40% MESA .15 Dimension MOP	13,200	3.80	165	0.83	0.00	0.23	0.25
2254273	16 0 8 43% MESA .19 Dimension	16,500	3.00	131	0.48	0.00	0.24	0.25
2253653	5 0 20 All Mineral 1% Ronstar®	11,000	4.60	200	0.23	0.00	0.92	2.00
2253657	20 0 8 40% MESA 1% Ronstar	11,000	4.60	200	0.92	0.00	0.37	2.00
2253853	16 0 8 43% MESA .86 Team® Pro	12,500	4.00	175	0.64	0.00	0.32	1.50
2153867	21 22 4 Starter .08% Mesotrione	11,000	4.30	187	0.90	0.94	0.17	0.15
2153777	12 24 11 AM Tupersan® Pro 3.71% MOP (25 lb. bag)	10,000	5.00	220	0.60	1.20	0.55	8.16
Fertilizer with Postemergent Herbicide 40 lb. Bag SGN 200 - 220								
2254386	0 0 7 LockUp SOP	14,500	3.40	150	0.00	0.00	0.24	1.70
2154348	19 0 7 .68 Confront	11,000	3.60	160	0.70	0.00	0.26	1.09
2253843	12 0 6 33%MESA with Lock Up	14,500	3.40	150	0.41	0.00	0.21	1.70
2254361	19 0 6 33% MESA with LockUp	14,500	3.40	150	0.65	0.00	0.21	1.70
2253597	20 0 7 25% Meth-Ex 40 Trimec	10,000	4.00	175	0.80	0.00	0.32	1.26
2154337	20 0 8 53% CRN Trimec (50 lb. bag)	15,500	3.20	140	0.64	0.00	0.26	1.26
Fertilizer with Insect Control 50 lb. Bag SGN 200 - 220								
2253714	16 0 8 30% MESA .225% Allectus™	13,500	3.67	160	0.59	0.00	0.29	0.36
2253682	10 0 4 30% MESA .3% Merit® (23 lb. bag)	10,000	2.30	100	0.23	0.00	0.09	0.30
2254686	15 0 5 40% MESA .2% Merit MOP	14,250	3.50	150	0.52	0.00	0.17	0.30
2254314	20 0 5 30% MESA .2% Merit	14,250	3.50	150	0.69	0.00	0.17	0.30
2254304	16 0 8 43% MESA .069% Bifenthrin®	15,000	3.33	145	0.53	0.00	0.27	0.10
2253751	15 0 5 40% MESA .067% Acelepryn	14,500	3.44	150	0.52	0.00	0.17	0.10
2253753	20 0 5 30% MESA .067% Acelepryn	14,500	3.44	150	0.69	0.00	0.17	0.10
2253826	25 0 5 51% MESA 100% EXPO .067 Acelepryn	14,500	3.44	150	0.861	0.00	0.17	0.10

NOTE: Coverages based on typical usage. Please refer to product labels for full rate information.

* Available in 2,000 lb. tote

** Available in 40 lb. bag

ProScape, Mesa, Meth-Ex 40 and Expo are registered trademarks of Lebanon Seaboard Corporation, 1600 East Cumberland St., Lebanon, PA 17042

LESP618 rev 11/17/17



ROOTS BIO PAK PLUS 3-0-20

- Provides beneficial bacteria
- 3-0-20 NPK with a collection of micronutrients
- Improves plant soil conditions, great to soil drench stressed plants

Rate: 1 Pound in 50 to 100 Gallons of water, drench or spray till soil is saturated
Sizes Available: 5 lb



ROOTS HEALTHY START TABLETS 12-8-8

- Condition Soil for sustainable growth with humic acids
- 18-24 month slow release
- Apply in planting hole or with dibble bar

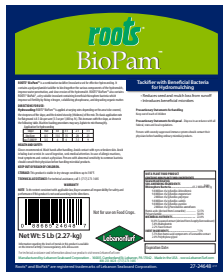
Rate: 2 Tablets per 1 foot of root ball
Sizes Available: 25 lb



ROOTS 27-9-9 FOR TREES

- Beneficial microbes sustain fertility over long term
- Addresses trees immediate needs
- Advanced Surfactant helps product penetrate soil

Rate: 8 lb per 100 gallons soil drench or injection
Sizes Available: 40 lb



ROOTS BIO PAM

- Seed inoculant for superior hydroseeding
- Maintains a moist environment for seed germination
- Introduces beneficial rhizosphere bacteria

Rate: 4 oz per 1000 square feet
Sizes Available: 5 lb



ROOTS PLANT SAVER 4-7-4

- Used for establishing or maintaining plants
- Increases absorption of water
- Provides beneficial bacteria and mycorrhizal fungi

Rate: 1 cup (8 ounces) per inch caliper
Sizes Available: 42 lb bucket



ROOTS TREE SAVER

- Helps reduce transplant shock and loss rates
- Helps plants deal with stresses such as poor pH, drought, salinity
- Five species of mycorrhizal fungi and six species of beneficial bacteria

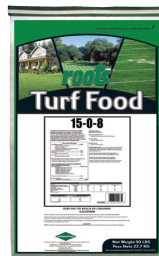
Rate: 3 ounces per inch caliper
Sizes Available: 150x3oz packets, 600 bulk ounces



ROOTS FLOWER SAVER PLUS 3-4-3

- Encourages healthy growth and abundant flowering
- Improves stress resistance
- Mix with soil

Rate: 6 pounds per 100 square feet, rototill into soil
Sizes Available: 30 lbs



ROOTS 15-0-8 TURF FOOD

- Includes beneficial microbes
- Enhances the biological life of the soil
- Includes animals and plant meal

Rate: 5 lb per 1000 square feet
Sizes Available: 50 lbs



ROOTS 3-4-4

- Azaleas and rhododendrons special
- Organic based

Sizes Available: 25 lbs



PRO MIX POTTING

- Potting Mix with water retention gel and 9 month osmocote fertilizer

Sizes Available: 2 Compressed Cubic Feet



WOODACE 14-14-14

- For flowering plants in beds, 16 week feed, full micro package

Sizes Available: 40#



WOODACE 12-3-6 A.C.R.E

- Feeds Acid loving plants in ornamental beds, such as Azaleas, Conifers, Rhododendrons, and Evergreens

Sizes Available: 50#



HIGH CAL LIME AMP XC

- AMP XC Unlocks Nutrients, supplies high cal lime to help soil, and supplies plant with humid acid for stress relief

Coverage: 8,250 sq feet
 Sizes Available: 50#



02

VILLAGE PREMIUM SEED



VILLAGEOUTDOORS



WOOD-LOK 100

- 100% Virgin Wood
- Hydromulch
- Dyed Green



WOOD-LOK HPM

- High strength organic binder
- Cures as a blanket
- Great for steep slopes



PREMIUM PAPER 200

- Includes dye pack and tackifier
- Low Moisture Bales
- 100% Recycled Cellulose



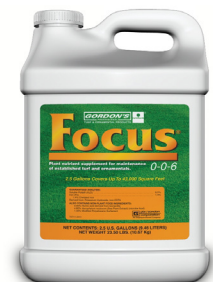
WOOD-LOK BLEND 100

- 100 Blend 70% Wood 30% Paper
- Dyed Green



PENNMULCH

- Full rate fertilizer
- Tackifier included
- Holds Moisture for fast germination



FOCUS

- High Strength Bio stimulant
- Turf Stress Recovery
- Provides nutrients for root growth and development

Hydro-Drench

HYDROSEEDING SOIL WETTER // MOISTURE RETENTION AID



VILLAGE HYDRO-DRENCH

- Keep seed moist longer for faster germination
- Eliminate hydrophobic soil conditions



EZ STRAW

- Wet to tack to ground
- Chopped straw
- Weed free

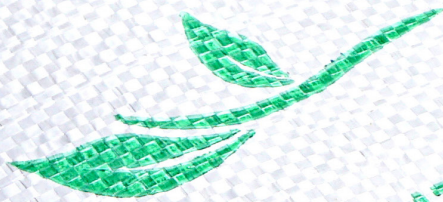


EXCEL SR-1

- Single Net Straw Roll
- Erosion Control Blanket
- Great for seed germination

Roll Size: 8 x 112.5 Feet

PREMIUM GRASS SEED



VILLAGE OUTDOORS

FESCUE PLUS

7857 Chardon Rd
Kirtland, Ohio 44094
440-256-1172



VILLAGEOUTDOORS

PREMIUM GRASS SEED

AVAILABLE BLENDS:

- Sports Turf 50/50 Blend
- Sun Mix
- Shade Mix
- Sun & Shade Mix
- Sod Blend
- Fescue Plus
- 3-Way Rye Blend

25lbs (11.34kg)



03

HERBICIDES



VILLAGEOUTDOORS

ADVERTORIAL

ESTER FORMULATIONS: THE COOL (WEATHER) CHOICE

This we know: warm weather is coming. But as winter hangs on, we still have weeds to kill. That means choosing the right herbicide for cool weather, and this is where you get to decide between an amine and an ester formulation.

In the summer heat, the choice is easier: ester formulations can be more volatile at higher temperatures, so look to an amine formulation. But in these cool spring days, ester formulations provide excellent activity because they penetrate the leaves' waxy cuticle better than water-soluble amine formulations. So weather permitting, an ester might be the best choice.

At PBI-Gordon, our ester formulation of choice is TZone™ SE Broadleaf Herbicide for Tough Weeds.

TZone SE is a reduced-solvent ester formulation. Delivering twice the triclopyr per acre than most combination products, TZone SE provides excellent cool-weather control of 60 of the toughest broadleaf weeds, including black medic, ground ivy, clover, and wild violet. It even gives you yellow nutsedge suppression.

But remember: to get the best performance out of an ester formulation, you have to follow the rules. If the temperature rises above 85° F, TZone SE isn't the right choice.



“...in these cool spring days, ester formulations provide excellent activity...”

So check the weather forecast, read the labels, and choose your herbicide wisely.

IT JUST SCREAMS, “FAST!”



TZone™ SE is the fastest triclopyr combo on the market.

Formulated for speed, and delivering twice the triclopyr per acre as most combination products, TZone™ SE Broadleaf Herbicide For Tough Weeds leaves the competition in the dust. The reduced-solvent ester formulation of TZone SE controls more than 60 of the toughest broadleaf weeds. And TZone SE does it with a fast visual response for fewer complaints and callbacks.

***Leave the lesser herbicides behind:
Choose TZone SE.***

PBIGordonTurf.com



Employee-Owned

TZone™ is a trademark and Checkered Flag® is a registered trademark of PBI-Gordon Corp. 11/17 05207

HERBICIDES



BRUSHMASTER

- Great On Poison Ivy
- Translocates to Kill Roots
- Controls Brush, Vines, Broadleaf, Weeds

Rate: 4-15 fl oz per gallon
 Sizes Available: Gal



CROSSCUT

- Triclopyr Combo Herbicide
- Ester Formulations
- Great On Hard To Control Weeds

Rate: 1.1-1.5 fl oz per 1000 square feet
 Sizes Available: 2.5 Gal



DIMENSION

- Pre Emergent Crabgrass Control
- Early Post Emergent Crabgrass Control
- Season Long Control

Rate: Refer to Label
 Sizes Available: 2.5 Gal, .5 Gal



FINALE

- Quickly Penetrates Green Tissue
- Results in 4 Days
- Low soil-residual

Rate: 3 fl oz per gallon
 Sizes Available: 2.5 Gal



GLYSTAR PLUS

- 41% Active
- Non Selective Herbicide
- Contains Surfactant

Rate: 3 fl oz per gallon
 Sizes Available: Gal



LONTREL

- Thistle Control
- Low Spray Volumes
- Over the Top Function

Rate: .1-.5 fl oz per 1000
 Sizes Available: QT



ORNAMEC OVER THE TOP

- Selectively controls grasses
- "Over the Top" ability on select groundcovers
- Safe on more than 500 plant species

Rate: Refer to Label
 Sizes Available: QT



PRODUCE

- Non Selective Control
- Pre Emergent control of Prodiamine
- Perfect for weed prone area

Rate: 3-6 fl oz per gallon
 Sizes Available: .5 Gal



PRONTO

- Eliminates Present Vegetation
- Prevents Vegetation for full season
- Use in Gravel Lots, Driveways, Fence Rows

Rate: 18 fl oz per 1000
 Sizes Available: Gal, 2.5 Gal



PROSEGE

- Nutsedge Control
- Moves Downward In Plant to Control Tubers
- Complete Control

Rate: .03 oz
 Sizes Available: 1.33 oz, .03 oz



Q4

- Excellent Warm Weather Control
- Controls Crabgrass
- Reseed in 14 day interval

Rate: 2.7-3.1 fl oz per 1000 square feet
 Sizes Available: QT, Gal, 2.5 Gal



QUINCLORAC 75 DF

- Dry Formula
- Post Emergent Crabgrass Control
- Container Covers Up to an Acre

Rate: .367 oz per 1000
 Sizes Available: 1#



QUINCLORAC 1.5L

- Liquid Formula
- Post Emergent Crabgrass Control
- Container Covers Up to an Acre

Rate: R.55 fl oz per 1000
 Sizes Available: .5 Gal



RANGER PRO

- 41% Glyphosate
- Results in 10 Days
- Makes Over 100 Gallons of Solution

Rate: 3 fl oz per gallon
 Sizes Available: 2.5 Gal, 30 Gal



ROUNDUP PROMAX

- 30 Minutes Rainfast
- More Concentrated Formula
- Liquid Formula

Rate: 2 fl oz per gallon
 Sizes Available: 1.67 Gal



ROUNDUP QUIKPRO

- Results in as little as 24 Hours
- Convenient Dry Formulation
- Rainfast in 1 Hour

Rate: 1.5 oz per gallon
 Sizes Available: 6.8#



SCYTHE

- Add to Glyphosate for faster results
- Burning Down Green Vegetation
- Non Selective Activity

Rate: 1-4 fl oz with glyphosate
 Sizes Available: 1 Gal, 2.5 Gal



AXXE

- Non-Selective
- OMRI Listed
- Fast Burn Down

Rate: 10 fl oz per gallon
 Sizes Available: 2.5 Gal

HERBICIDES



SPEEDZONE

- Cool Weather Performance
- Rainfast in 4 Hours
- Reseed in One Week

Rate: 1.1-1.5 fl oz per 1000 square feet
Sizes Available: 1 Gal, 2.5 Gal



SULFENTRAZONE

- Controls Nutsedge
- Fast Top Results
- Use on younger nutsedge

Rate: Refer to Label
Sizes Available: 6 fl oz



SURGE

- Warm Weather Formula
- Water Based
- Nutsedge Suppression

Rate: 1.1-1.5 fl oz per 1000 square feet
Sizes Available: 1 Gal, 2.5 Gal



T/I 2.5G

- Generic Snapshot
- Apply Below Mulch
- Use Spred Rite for Accurate Application

Rate: 2.5 lbs per 1000
Sizes Available: 50#



T-ZONE

- Fastest Triclopyr Combo on Market
- Great Control of Wild Violet
- Ester Formula

Rate: 1.1-1.5 fl oz per 1000 square feet
Sizes Available: QT, Gal, 2.5 Gal



TENACITY

- Pre and Post Emergent Weed Control
- Use at time of seeding
- Easy to use in Hydroseeders

Rate: Refer to Label
Sizes Available: 8 fl oz



TREFLAN 5G

- Economical Pre Emergent Weed Control
- Apply Below Mulch
- Use Spred Rite for Accurate Application

Rate: 2 lbs
Sizes Available: 40#



TRIAD

- Economical Control of Broadleaf Weeds
- Low Order
- Applicator 3 Way Herbicide

Rate: 1.1-1.5 fl oz per 1000 square feet
Sizes Available: 2.5 Gal



TRIAMINE JET SPRAY

- Aerosol Spray Can
- Convenient Broadleaf Weed Control
- Easy to Carry

Rate: Refer to Label
Sizes Available: Aerosal



TRIMEC 992

- Economical Control of Broadleaf Weeds
- Applicator Formula
- Quick Knock Down

Rate: 1.1-1.5 fl oz per 1000 square feet
Sizes Available: 1 Gal



TRIMEC BENT

- Minimize Risk to Bentgrass
- Broadleaf Weed Control
- Effective Up To 85 Degrees F

Rate: 1.1-1.5 fl oz per 1000 square feet
Sizes Available: 1 Gal



TRIMEC CLASSIC

- Low Odor
- Synergistic Inert Ingredients
- Broadleaf weed control

Rate: 1.1-1.5 fl oz per 1000 square feet
Sizes Available: 1 Gal



04

INSECTICIDES



VILLAGEOUTDOORS



APICIDE

- Bee Dust
- Carbaryl Active
- Carried in nest

Sizes Available: 10 oz



ACELEPRYN

- Foliar and Systemic
- Treats Grub and Surface Insects
- Season long control

Sizes Available: 1 Gallon



AZAGUARD

- Botanical insecticide and miticide
- Regulates insect growth
- Indoor and outdoor use

Sizes Available: Qt

Arena[®]
INSECTICIDE



ABAMECTIN

- Controls leaf miners, mites
- Suppresses whiteflies, thrips, and aphids
- Avid alternative

Sizes Available: Qt, Gallon



BIFEN 7.9

- Bifethrin active
- Broad spectrum uses
- Talstar alternative

Sizes Available: Gallon

ARENA

- Long lasting residual
- Great on resistant Chinch bug
- Curative Grub Control

Sizes Available: 30 lb.



SEVIN

- Carbaryl Active
- Maintain Agitation in spray tank
- Preventative and Curative Properties

Sizes Available: 2.5 Gallon



TENGARD

- Permethrin Active
- Creates Barrier
- Low Odor

Sizes Available: 1.25 Gallon



DYLOX

- Curative Grub Control
- Must be watered in
- Use after damage is present

Sizes Available: 30 lb.

INSECTICIDES



FLORAMITE

- Ornamental Miticide
- 3 Week residual
- Inactive towards many beneficial mites

Sizes Available: QT



FORBID

- Miticide
- Effective on resistant mites
- Better when used before high population of mites

Sizes Available: 8 oz



HEXYGON

- Miticide
- 60 Day Residual
- Ovicide traits prevent egg lay of next generation

Sizes Available: 6 oz



IMIDACLOPRID 2F

- Turf and Ornamental
- Merit Alternative
- Liquid Formulation

Sizes Available: Gallon



IMIDACLOPRID 75 WSB

- Turf and Ornamental
- Merit Alternative
- 4 oz Water Soluble Packet

Sizes Available: Packet, Case



VILLAGEOUTDOORS

PURESPRAY

- Horticultural Oil
- Rate Varies Upon Weather Conditions
- Protect Plants From Pest

Sizes Available: 2.5 Gallon, 55 Gallon



TALSTAR G

- Granular Bifenthrin
- Easy Application
- Great for ant hills and perimeter pest

Sizes Available: 25 lb



TALSTAR

- Bifenthrin active
- Broad spectrum uses
- Turf and Pest Applications

Sizes Available: Gallon



ZYLAM

- Liquid formulation of dinotefuran
- Used as a drench or soil injection
- Translaminar activity to quickly move through the leaf

Sizes Available: QT



05

FUNGICIDES



VILLAGEOUTDOORS

FUNGICIDES



AZTEB SELECT

- Azoxystrobin and Tebuconazole
- Highly Systemic Formulation
- Fungicide Class: Strobilurin

Rate: .75-1.5 fl oz per 1000 sq ft
 Sizes Available: 1 Gallon



CHLOROTHALONIL 720 SE-

- Brand Alternative Daconil
- Contact Fungicide, Low Resistance
- Fungicide Class: Nitrial

Rate: 2-5.5 fl oz per 1000 sq ft
 Sizes Available: 2.5 Gal



CHLOROTHALONIL 82.5 DF SELECT

- Dry Flowable
- Contact Fungicide, Low Resistance
- Fungicide Class: Nitrial

Rate: 1.82-5 oz per 1000 sq ft
 Sizes Available: 5 lb



FOSAL SELECT

- Water Dispersible Granule
- Effective on Pythium and Yellow Tuft
- Suppression on Bacterial Blights

Rate: 4-8 oz per 1000 sq ft
 Sizes Available: 5.5 lb



IPRODIONE 2F SELECT

- Effective for all seasons
- Local Penetrant
- Fungicide Class: Dicarboximides

Rate: 2-8 fl oz
 Sizes Available: 2.5 Gallon



MYCLOBUTANIL 20EW T&O

- Brand Alternative Eagle 20EW
- Labeled for Residential Turf and Ornamental
- Fungicide Class: DMI

Rate: .5-2.5 fl oz per 1000 sq ft
 Sizes Available: 1 Gallon



PILLAR G

- Pyraclostrobin and Triticonazole
- Convenient Granular Formulation
- Fungicide Class: DMI/Strobilurin

Rate: 3.0 lb per 1000 sq ft
 Sizes Available: 30 lb



LEBANON EAGLE .62 G

- Systemic Protectant and Curative Fungicide
- Treats Dollar Spot and Rust in Residential Turf
- Fungicide Class: DMI

Rate: 2.5 lb per 1000 sq ft
 Sizes Available: 25 lb



PPZ 41.8 SELECT

- Brand Alternative Spectator
- Broad Spectrum of Control
- Fungicide Class: DMI

Rate: .37-1.45 fl oz per 1000 sq ft
 Sizes Available: 1 Gallon



PROPICONAZOLE 14.3 SE-

- Brand Alternative Banner Maxx
- Controls over 18 Turf Diseases
- Fungicide Class: DMI

Rate: 5-4 fl oz per 1000 sq ft
 Sizes Available: 2.5 Gallon



TM 4.5 SELECT

- Brand Alternative 3338 F
- Dollar Spot is commonly resistant
- Fungicide Class: Benzimidazoles

Rate: 2-5 fl oz per 1000 sq ft
 Sizes Available: 2.5 Gallon



TM/C

- Thiophanate Methyl and Chlorothalonil
- Contact and Systemic Fungicide
- Fungicide Class: Nitrial/Benzimidazoles

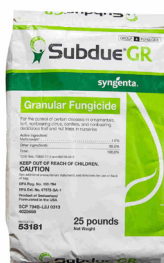
Rate: 2-8 oz per 1000 sq ft
 Sizes Available: 5 lb



TEBUCONAZOLE 3.6 SELECT

- Controls Difficult Diseases
- Effective on Dollar Spot
- Fungicide Class: DMI

Rate: 6-1.1 fl oz per 1000 sq ft
 Sizes Available: 1 Gallon



SUBDUE G

- Pythium Control
- Granular Formulation
- Use on new seedlings

Rate: 1.5 lb per 1000 sq ft
 Sizes Available: 25 lb



PROPHECY

- Dispersing Granule
- Systemic Disease Control
- Fungicide Class: DMI

Rate: 2.5 – 5.0 lbs. per 1,000 square feet
 Sizes Available: 25 lb



XZEMPLAR

- Immediate knockdown
- Preventative and Curative Properties
- Fungicide Class: Carboxamides

Rate: .21-.26 oz per 1,000 square feet
 Sizes Available: 11.4 oz



LEXICON

- Delivers advanced plant health
- Long-lasting control
- Fungicide Class: Carboxamides/Strobilurins

Rate: .34-.47 oz per 1000 square feet
 Sizes Available: 1 lb



REGULATE

- Alternative to Subdue Max
- Pythium Control
- Fungicide Class: Phenylamides

Rate: .5-1 fl oz per 1000 sq ft
 Sizes Available: 1 gallon



06

AQUATICS



VILLAGEOUTDOORS



AQUA STAR

- Aquatic Glyphosate
- Controls Water Lettuce and Cattail
- Use with Surfactant

Sizes Available: 2.5 Gallon



CUTRINE PLUS

- Algaecide
- Controls Algae in 1-4 Days
- Copper formulation

Sizes Available: 1 Gallon



CUTRINE PLUS G

- Granular Formulation
- Long Lasting
- Treats Algae and Chara

Sizes Available: 30#



AQUA BLUE SELECT

- Non Toxic Safe for Pets
- Filters UV to slow plant growth
- Brings blue color to murky ponds

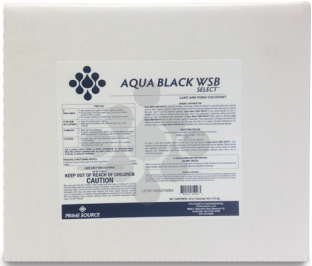
Sizes Available: 1 Gallon



AQUE BLACK SELECT

- Non Toxic Safe for Pets
- Creates Natural Mirror Effect
- Filters UV to slow plant growth

Sizes Available: 1 Gallon



AQUA BLACK WSB

- Non Toxic Safe for Pets
- Creates Natural Mirror Effect
- Filters UV to slow plant growth

Sizes Available: 10x5 oz packets



07

SPORTS FIELDS



VILLAGEOUTDOORS



PC RAPID DRY

- Stay in the game with Rapid Dry drying agent. These sand-like granules are designed to quickly wick away excess water from your infield, keeping your games playing safely and without delay.

Sizes Available: 50#



PC INFIELD CONDITIONER

- Designed to meet the challenges of wet, dry or compacted infields, this durable granule helps create passageways for drainage and eliminate compaction for truer bounces and safer play.

Sizes Available: 50#



EASY MOUND PACKING CLAY

- This deep reddish brown packing clay is ideal for quick and easy building and repairing common wear areas on pitcher's mounds and batter's boxes. Also available in pre-formed bricks.

Sizes Available: 40# Bags or 304 Bricks per pallet



DURASTRIP FIELD PAINT

- Aerosol spray can safely formulated for a safe environment

Sizes Available: Aerosol



ATHLETIC FIELD MARKER

- Safe White Field Marker

Sizes Available: 50#



08

ANIMAL CONTROL



VILLAGEOUTDOORS



DEER SCRAM

- Granular Formula
- Best for low growing plants and flowers
- Repels Unwanted Animals

Sizes Available: 25# Bucket



VOLE SCRAM

- Granular Formula
- Natural Product
- Repels Unwanted Animals

Sizes Available: 25# Bucket



MOLE SCRAM

- Granular Formula
- Natural Product
- Repels Unwanted Animals

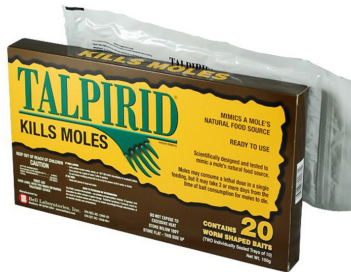
Sizes Available: 25# Bucket



GOOSE SCRAM

- Granular Formula
- Natural Product
- Repels Unwanted Animals

Sizes Available: 25# Bucket



TALPIRID MOLE BAIT

- Lethal Baits
- Imitates Natural Food Supply
- Easy to use

Sizes Available: 20 Worms



DEER OUT

- Liquid Formulation
- 30-60 Day Residual
- Natural Product

Sizes Available: QT, Gal, 2.5 Gal



09

SPRAY ADDITIVES





80/20 SELECT

- Non-Ionic Spreader Sticker
- Great for herbicides
- Economical Formula



DUO STICK

- Blend of surfactants and methylated soybean oils
- Great for tough grassy weeds
- Use with quinclorac for crabgrass



TURF MARKER BLUE SELECT

- See where you spray
- Blue water soluble color
- Great with round up



TANK CLEANER

- Reducing or eliminating residues
- Extend the life of seals
- Avoid damaging plants due to cross contamination



PS 804 SELECT

- Surfactant penetrant acidifier and deposition aid
- Reduces drift
- Low Foaming



UNFOAMER

- Prevents foam from forming
- Knocks down existing foam
- Reduces mixing time



FOAM MARKER

- High viz foam marker
- Safe for turf
- 100:1 mix ratio



MASKING AGENT SELECT

- Natural Wintergreen Fragrance
- Mask Chemical Odors
- Does not effect spray efficacy



VILLAGE OUTDOORS

NON IONIC BUFFER

- Non-Ionic Surfactant
- PH buffer for optimal herbicide performance



10

SMALL EQUIPMENT



VILLAGEOUTDOORS

ALL THE
POWER
YOU NEED.



REDMAX BLOWERS TAKE HOLD OF INDUSTRY-LEADING POWER & DURABILITY.

RedMax blowers are powerful. They're also efficient and easy to operate. Packed with features that include two-stage commercial air filters, vibration dampening, cruise control, and cushioned back pads, RedMax blowers truly deliver all the power you need.



EBZ8500/RH
COMMERCIAL
BLOWER

Anti-static throttle lever prevents static electricity shock.

Clean air intake system reduces dust and extends filter life. (EBZ8500 Series Only)

Two stage, heavy-duty air filtration system.

Reflective decals provides safe operation in low light conditions.

EBZ7500/RH



EBZ6500/RH



EBZ5150/RH



HB281



HBZ260R



As us about commercial fleet discounts or financing and leasing options

NEW BHB250P Battery Blower

Supercharge your commercial landscaping with the RedMax Battery Series blower. All the power and performance you expect with less noise, minimal maintenance and no direct emissions.

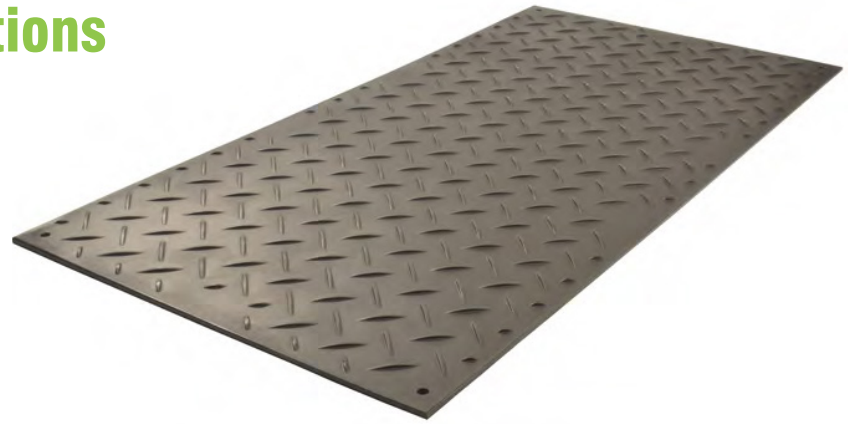


Battery and charger sold separately.

TuffTrak®

Ground Protection Solutions

The AlturnaMat® is a medium duty mat with a load capacity of 120 tons. It features an aggressive tread pattern and a durable polyethylene construction. It is designed to create temporary road ways, walk ways and work sites.



Material: Polyethylene

- 48" x 96" x .5"
- Usable surface area of 32 sq. ft.
- Weight 86 lbs.
- Diamond plate tread
- Black, white and clear colors available

MODEL: AM48

APPLICATIONS

- Civil Engineering
- Construction
- Military Sites
- Landscaping
- Infrastructure and Utilities Maintenance
- Transmission
- Oil and Gas

SPECIFICATIONS

EZ LINKS

MODEL: ???



These connectors are designed to connect two AlturnaMats® when used for pedestrian applications.

ROUND TURN-A-LINKS

MODEL: RTL-D-G



These round connectors can connect two or four AlturnaMats® to create a temporary work site or walk way.

FLAT TURN-A-LINKS






MODEL: FTL-D-G



These flat connectors can connect two or four AlturnaMats® to create a temporary work site or walk way.

Model	Length	Width	Thickness	Load Capacity	Color	Weight
AM24	24 in. (60.96 cm)	48 in. (121.92 cm)	0.5 in. (1.27 cm)	120 ton	Black, White, or Clear	21.5 lbs. (9.75 kg)
AM26	24 in. (60.96 cm)	72 in. (182.88 cm)	0.5 in. (1.27 cm)	120 ton	Black, White, or Clear	32.4 lbs. (14.7 kg)
AM28	24 in. (60.96 cm)	96 in. (243.84 cm)	0.5 in. (1.27 cm)	120 ton	Black, White, or Clear	43 lbs. (19.5 kg)
AM36	36 in. (91.44 cm)	72 in. (182.88 cm)	0.5 in. (1.27 cm)	120 ton	Black, White, or Clear	51 lbs. (23.13 kg)
AM38	36 in. (91.44 cm)	96 in. (243.84 cm)	0.5 in. (1.27 cm)	120 ton	Black, White, or Clear	64 lbs. (29.03 kg)
AM48	48 in. (121.92 cm)	96 in. (243.84 cm)	0.5 in. (1.27 cm)	120 ton	Black, White, or Clear	86 lbs. (39 kg)



-  Ergonomic tank design & lightweight... only 7.7 lbs or 7.9 lbs
-  Long wearing Santoprene® Piston Cup
-  Hydraulic Agitation for continuous mixing
-  Quick-adjust and thick padded straps
-  Stainless Steel spray wand

SERIOUS ABOUT SPREADERS

Our two most popular professional rotary spreaders are in-stock and ready for shipment. Get yours today!



Model 2000™ Professional Rotary Spreader

- High quality spreader
- Helical cone-adjust spread pattern for better accuracy
- Pneumatic tires
- Heavy duty enamel finished for long life
- Hopper cover included




Model 2000 SR™ Professional Rotary Spreader

- High quality stainless steel frame rotary spreader
- Helical cone-adjust spread pattern for better accuracy
- Heavy duty stainless steel frame for long life
- Pneumatic tires
- Right side deflector shield
- Hopper cover included



AndersonsPlantNutrient.com/GolfSpreaders

800-253-5296

 @AndersonsTurf

REDEFINE YOUR MOWING EXPERIENCE

with the new BlackHawk HP from Dixie Chopper



BLACKHAWK HP™



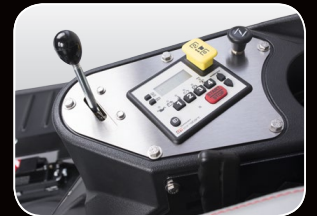
Suspension Seat – Full suspension seat for ultimate comfort



OCDC – Foot-operated discharge chute to control grass clippings



Parker® HT Series – Smooth steering and 1,000 hour oil change intervals



InCommand Console – Keyless ignition, SoftStart clutch engagement, and more

A mower built to give you an unparalleled mowing experience is coming to a Dixie Chopper dealer near you. Elevate your ride with the smoothest steering, intuitive controls, and a deep 7-gauge deck for heavy-duty mowing. See the new BlackHawk HP online or at your local Dixie Chopper dealer today.

dixiechopper.com | 765.246.7737

DIXIE CHOPPER®
The World's Fastest Lawn Mower.



12

ICE MELTER



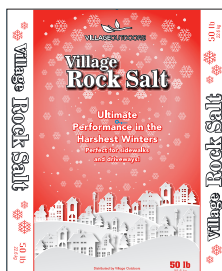
VILLAGEOUTDOORS



VILLAGE ICE MELT

- Sodium, Magnesium, Calcium Blend
- Dyed Blue for easy application
- Melts to -15

Sizes Available: 50#



VILLAGE ROCK SALT

- Large Granule
- Sodium Chloride
- Melts to -5

Sizes Available: 50#



ROCK SALT

- Large Granule
- Sodium Chloride
- Melts to -5

Sizes Available: 50#



DOW FLAKE

- Calcium Flake
- Great for narrow walks
- Melts to -20

Sizes Available: 50#



MAGNESIUM FLAKE

- Environmentally Friendly
- Safe For Pets
- All Natural

Sizes Available: 50#



PELADOW

- Calcium Pellet
- Less corrosive
- Melts to -25

Sizes Available: 50#, 50# Bucket



VILLAGEOUTDOORS

VILLAGE ICE MELTER

- Sodium, Magnesium, Calcium Blend
- Dyed Blue for easy application
- Melts to -15

Sizes Available: 50#

VILLAGEOUTDOORS

Village Ice Melter

Ultimate
Performance in the
Harshest Winters

Perfect for sidewalks
and driveways!

Village Ice Melter

Village Ice Melter

50 lb
22.6 kg

50 lb
22.6 kg



440-256-1172
www.villageoutdoors.com
7857 Chardon Road, Kirtland, OH 44094